

# STYLE

8 JANUARY 2017

MOVE OVER  
MINDFULNESS  
— IT'S TIME  
TO BEDITATE

## BEAUTY QUEEN

The supermodel's favourite  
make-up artist, Pat McGrath, on  
how to create a flawless face

JULIA NOBIS SHOT BY LIZ COLLINS



## INTERIORS

An artwork by  
Andrea Branzi sits  
on the dining room  
table. The Senat  
armchairs are by  
Pierre Jeanneret  
(Galerie Downtown).  
On the shelf is a  
lamp by Tatiana  
Trouvé (Galerie  
Perrotin)

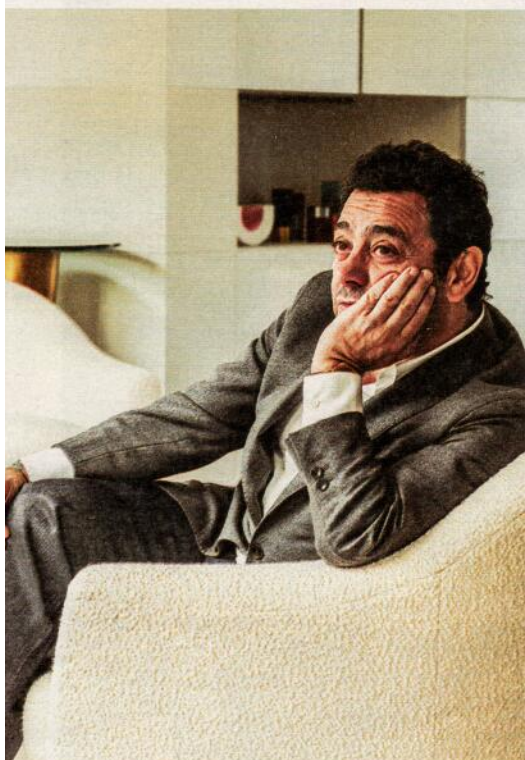
FRENCH  
CONNECTION

Fashion architect Charles Zana has  
taken a mid-20th-century Parisian  
apartment and turned it into a  
modern classic. By *Ana Cardinale*

**H**otel Le Marianne, the restaurant  
Artcurial, Zadig & Voltaire's store at  
the Palais des Congrès — if you've  
spent any amount of time in Paris  
recently, chances are you will have  
encountered one of Charles Zana's  
designs. The architect, who trained at  
the Beaux-Arts in Paris and set up his  
own agency in 1990, is known for  
his modern-classic design.

Zana cites the French interior designer Jean-  
Michel Frank and Italian architect Ettore Sottsass  
as references. "I don't like too much decoration, but  
I do like quality materials. I pay a lot of attention to





the flow of the home, then the colour, the materials and the light," he says.

He was commissioned by private clients to perform his magic on their 1950s duplex apartment in the 16th arrondissement. "To create a serene place, I use neutral tones on the walls and warmer shades for the furniture," Zana says.

The airy decor is perfect for the open-plan first floor, where he designated different spaces by the strategic placing of rugs and large items of furniture. The entrance hall and a large kitchen are also on this level; the dining area, living room and bedrooms are upstairs.

"The sofas, tables, consoles and armchairs take their inspiration from mid-20th-century trends," he says. "I like their functionality and the softness of the materials." ➔

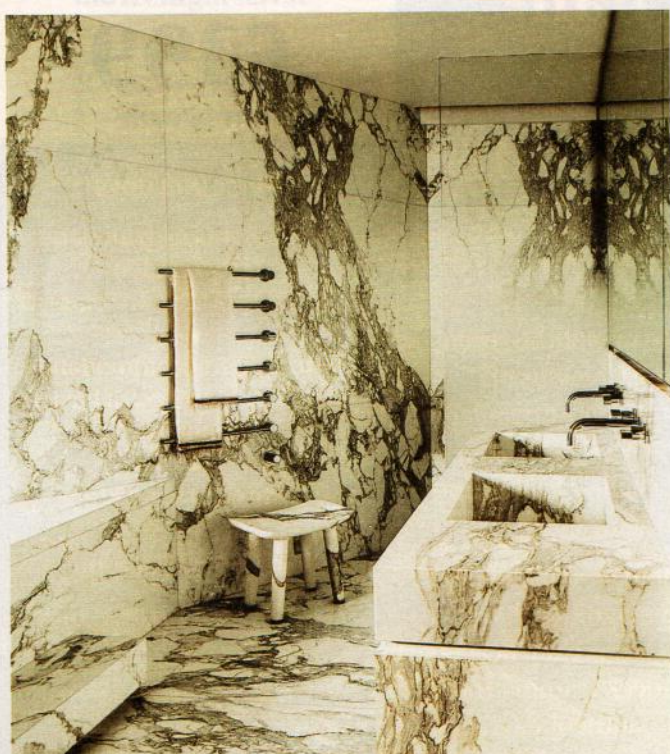




A Fireside chair by Jean Royère (Galerie Jacques Lacoste) sits in the living room with a hammered brass chair by Philippe Hiquily (Galerie Yves Gastou). Far left Charles Zana







➔ **Above** The marble bathroom walls and floors by Calacatta are complemented by a Nomad stool by Zana and Indian cotton towels by Khadi

**Top right** Imaginary Friends by the artist Kaws hangs on the wall in the bedroom next to a chair by Finn Juhl

**Right** A console by Zana is topped with a lamp by Ronan & Erwan Bouroullec, vases by Andrea Branzi and an ashtray by Jouvé

